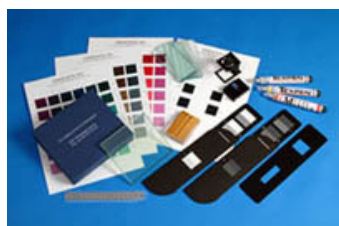


approximate match between the eight blue wool and five ASTM lightfastness categories. This table is a guide for the selection of artist paints only and should not be used to extrapolate to other products.

Blue wool / ASTM lightfastness standards		
A	B	Comments
8	900	I. Excellent lightfastness. Blue wool 7-8. The pigment will remain unchanged for more than 100 years of light exposure with proper mounting and display. (Suitable for artistic use.)
7	300	
6	100	II. Very good lightfastness. Blue wool 6. The pigment will remain unchanged for 50 to 100 years of light exposure with proper mounting and display. (Suitable for artistic use.)
5	32	III. Fair lightfastness (Impermanent). Blue wool 4-5. The pigment will remain unchanged for 15 to 50 years with proper mounting and display. ("May be satisfactory when used full strength or with extra protection from exposure to light.")
4	10	
3	3.6	IV. Poor lightfastness (Fugitive). Blue wool 2-3. The pigment begins to fade in 2 to 15 years, even with proper mounting and display. (Not suitable for artistic use.)
2	1.3	
1	0.4	V. Very poor lightfastness (Fugitive). Blue wool 1. The pigment begins to fade in 2 years or less of light exposure, even with proper mounting and display. (Not suitable for artistic use.)

A : Blue wool reference strip
B : Megalux hours of exposure before fading becomes noticeable.
 Exposure to average indirect indoor lighting (120 to 180 lux) for an average 12 hours a day equals from 0.53 to 0.79 megalux hours each year.
Sources: Mark Gottsegen, *The Painter's Handbook*; Karen Colby, "A Suggested Exhibition Policy for Works of Art on Paper" (*Journal of the International Institute for Conservation: Canadian Group*, 1992).

Grey Scale for Change in Colour



The grey scale consists of nine pairs of non-glossy neutral grey coloured chips, which illustrate the perceived colour differences. These are used along side the blue wool samples to determine the corresponding fastness rating (as described in ISO 105-A02).

The problem with the blue wool scale and the grey scale is that it is a